

FLANGE AND CONNECTORS

STEEL DISMANTLING JOINTS



MOD. 9850	PN 10	DN 80-2000
MOD. 9851	PN 16	DN 80-2000
MOD. 9852	PN 25	DN 80-2000



3-Flanges steel dismantling joints.

SPECIAL FEATURES

- 3-flange-type, restraint.
- Body high quality EPOXY powder coated, coating thickness DFT min. 250 microns.
- Adjustable axial stroke in order to fit the application on site.

MATERIALS

Body:

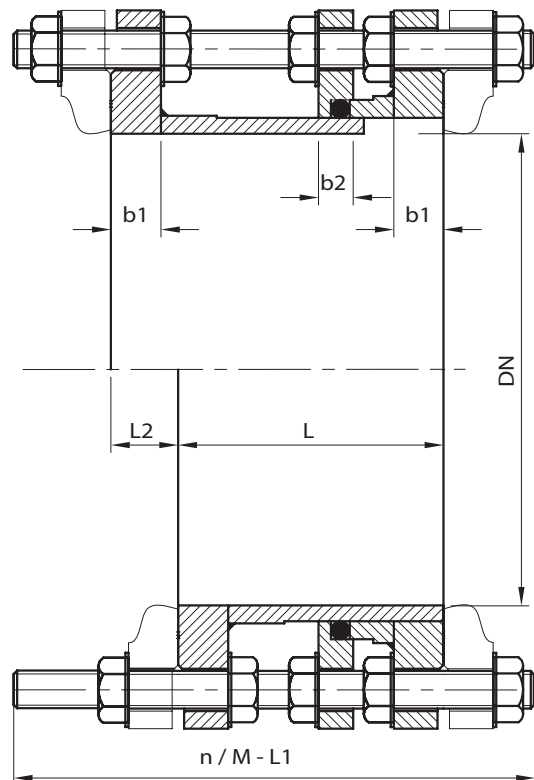
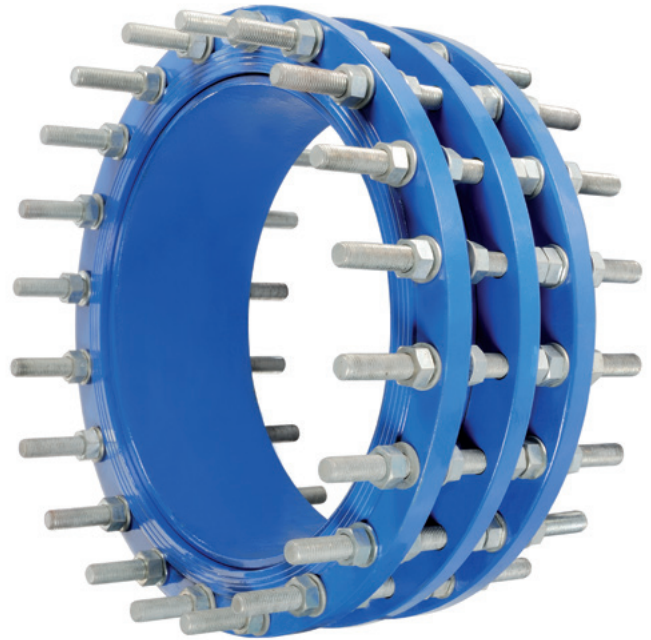
Steel S235JR, electro welded (equivalent to UNI Fe360B or DIN St 37.2)
on demand: ductile iron EN-GJS-500-7 / EN 1563 (former to DIN GGG50)

Gasket:

Rubber, potable water approved

Bolts/nuts/washers:

Steel class 8.8, galvanised
on demand stainless steel 1.4301 or 1.4401 (equivalent to AISI 304 or AISI 316)



All metal, rubber, and coatings used have been designed for contact with water for human consumption, pursuant to the terms of Italian Health Ministry decree n° 174, dated 6/4/2004.

STEEL DISMANTLING JOINTS

DN	PN	L	Corsa L2	b1	b2	L1	n - M	Weight (kg)
80	10	160	40 (+/- 20)	16	16	320	4-M16	15
	16	180		18	18	330	8-M16	17
	25	190		22	21	340	8-M16	21
100	10	170	40 (+/- 20)	18	18	320	8-M16	22
	16	180		20	18	330	8-M16	25
	25	190		22	21	340	8-M20	29
125	10	170	40 (+/- 20)	20	18	340	8-M16	28
	16	180		22	18	330	8-M16	31
	25	190		24	21	360	8-M24	36
150	10	180	40 (+/- 20)	20	18	350	8-M16	35
	16			22	18	340	8-M20	39
	25			24	23	380	8-M24	45
200	10	180	40 (+/- 20)	22	18	350	8-M20	48
	16			24	20	340	12-M20	53
	25			26	23	400	12-M24	67
250	10	180	40 (+/- 20)	22	18	350	12-M20	62
	16			24	20	340	12-M24	69
	25			28	25	400	12-M27	85
300	10	200	50 (+/- 25)	24	24	380	12-M20	89
	16			26	24	380	12-M24	98
	25			30	28	420	16-M27	123
350	10	200	50 (+/- 25)	24	24	380	16-M20	97
	16			28	26	380	16-M24	107
	25			32	30	440	16-M30	134
400	10	200	50 (+/- 25)	26	26	400	16-M24	118
	16			30	26	390	16-M27	132
	25			34	30	460	16-M33	168
450	10	200	50 (+/- 25)	28	26	400	20-M24	145
	16			32	28	390	20-M27	160
	25			36	32	400	16-M33	194
500	10	200	50 (+/- 25)	30	26	400	20-M24	175
	16			34	28	410	20-M30	193
	25			40	34	470	20-M33	233
600	10	210	50 (+/- 25)	32	30	430	20-M27	256
	16			36	30	410	20-M33	285
	25			45	36	480	20-M36	338
700	10	210	50 (+/- 25)	32	30	430	24-M27	360
	16			36	30	420	24-M33	398
	25			46	40	520	24-M39	454
800	10	310	60 (+/- 30)	32	30	580	24-M30	470
	16			38	30	540	24-M36	520
	25			48	42	610	24-M45	608
900	10	310	60 (+/- 30)	34	32	580	28-M30	521
	16			40	32	540	28-M36	578
	25			52	43	610	28-M45	685
1000	10	310	60 (+/- 30)	36	32	600	28-M33	585
	16			42	33	540	28-M39	655
	25			56	45	540	28-M52	794
1200	10	320	60 (+/- 30)	40	32	600	32-M36	715
	16			42	36	570	32-M45	810
	25			60	48	700	32-M52	890
1400	10	320	70 (+/- 35)	44	36	600	36-M39	927
	16			48	38	580	36-M45	1186
	25			62	50	700	36-M56	1275
1600	10	360	70 (+/- 35)	48	36	680	40-M45	1238
	16			52	38	650	40-M52	1378
	25			70	58	730	40-M56	1563
1800	10	360	70 (+/- 35)	52	38	680	44-M45	1500
	16			58	40	650	44-M52	2050
	25			78	62	740	44-M64	2400
2000	10	380	70 (+/- 35)	56	38	720	44-M45	2010
	16			62	40	710	48-M56	2508
	25			86	68	760	48-M64	3009

All metal, rubber, and coatings used have been designed for contact with water for human consumption, pursuant to the terms of Italian Health Ministry decree n° 174, dated 6/4/2004.