

BUTTERFLY VALVES

CENTRIC TYPE - FLANGED



MOD. 3501 | PN 10-16 | DN 50-1200

Flanged butterfly with reduced face-to-face dimension



SPECIAL FEATURES

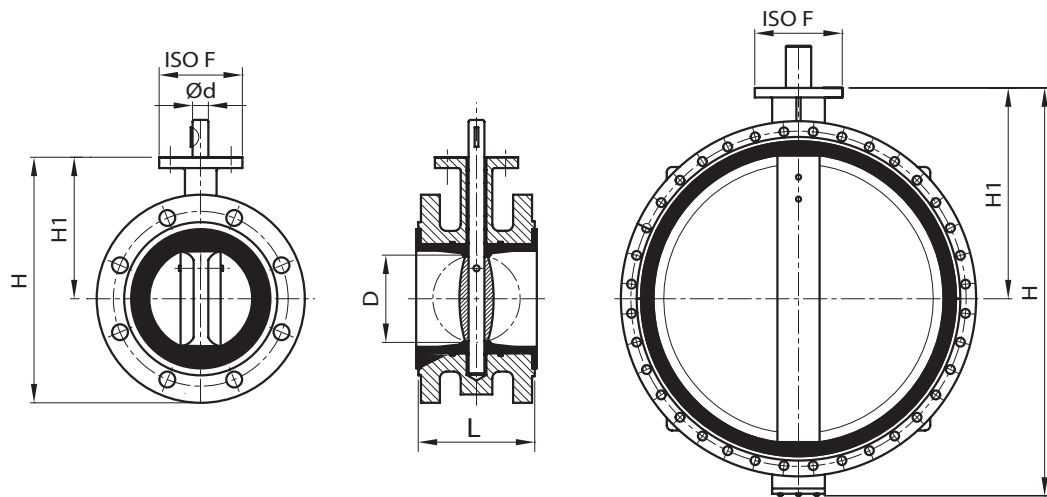
- Double flanged type.
- Design according to the requirements of EN 1074 and certified according to European directive 97/23/CE (PED) by third part organisation (module H).
- Body completely high quality EPOXY powder coated (fusion bonded).
- Face-to-face reduced dimensions according to EN 558-1 Series 13 -(former DIN 3202-K1).
- Shut-off system without seat reducing the net flow section.
- Inside fully rubber lined by a sleeve, up to the rising profile on flange connection.
- Bearings in self-lubricated material with secondary O-Rings sealing embedded.
- Manual operation by lever (standard equipment up to DN 200) or by gearbox and handwheel (DN>200).
- On request, the valves could be equipped by extension spindle (for underground installation), electric or pneumatic actuators.



MATERIALS

BODY	COD.	DISC	SHAFT(S)	LINER	BEARINGS
Cast iron EN-GJL-250	Z01	Stainless steel 1.4401 (UNI X5CrNiMo1712 or AISI 316)	Stainless steel 1.4021 (UNI X2CrS13 or AISI 420)	EPDM	Resin or self- lubricated bronze
	Z03	Stainless steel 1.4401 (UNI X5CrNiMo1712 or AISI 316)		NBR	
	Z05	Ductile iron EN-GJS-400-15 nickel plated		EPDM	
	Z07	Ductile iron EN-GJS-400-15 nickel plated		NBR	
	Z09	Galvanized steel		EPDM	
	Z11	Galvanized steel		NBR	
	Z13	Stainless steel 1.4301 (UNI X5CrNi1810 or AISI 304)		EPDM	
	Z15	Stainless steel 1.4301 (UNI X5CrNi1810 or AISI 304)		NBR	
	Z20	Ductile iron EN-GJS-400-15 epoxy coated		VITON	
Ductile iron EN-GJS-400-15	Q01	Stainless steel 1.4401 (UNI X5CrNiMo1712 o AISI 316)	Stainless steel 1.4021 (UNI X2CrS13 or AISI 420)	EPDM	Resin or self- lubricated bronze
	Q03	Stainless steel 1.4401 (UNI X5CrNiMo1712 o AISI 316)		NBR	
	Q05	Ductile iron EN-GJS-400-15 nickel plated		EPDM	
	Q07	Ductile iron EN-GJS-400-15 nickel plated		NBR	
	Q09	Galvanized steel		EPDM	
	Q11	Galvanized steel		NBR	
	Q13	Stainless steel 1.4301 (UNI X5CrNi1810 or AISI 304)		EPDM	
	Q15	Stainless steel 1.4301 (UNI X5CrNi1810 or AISI 304)		NBR	
	Q20	Ductile iron EN-GJS-400-15 epoxy coated		VITON	

All metal, rubber, and coatings used have been designed for contact with water for human consumption, pursuant to the terms of Italian Health Ministry decree n° 174, dated 6/4/2004.



DN	H	H1	L	D	ISO F	$\varnothing d$
50	241	161	108	51	F05	13
65	264	175	112	63	F05	13
80	276	181	114	77,5	F05	13
100	314	200	127	103	F07	16
125	340	213	140	122	F07	19
150	365	226	140	154,5	F07	19
200	435	260	152	201	F10	22,5
250	495	292	165	249	F10	29
300	579	337	178	300	F12	32
350	635	368	190	332	F12	32
400	701	400	216	387,5	F14	33,5
450	749	422	222	438,5	F14	38
500	841	480	229	489	F14	41,5
600	1021	562	267	590	F16	51
700	1156	629	292	691,5	F25	64
800	1260	666	318	792	F25	64
900	1375	722	330	861	F25	75
1000	1518	800	410	961	F25	85

DN > 1000 on demand.

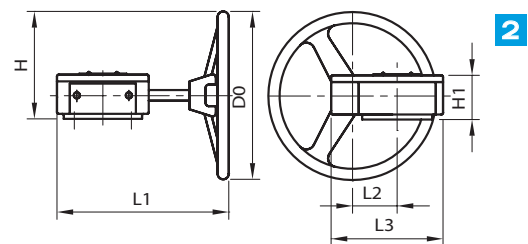
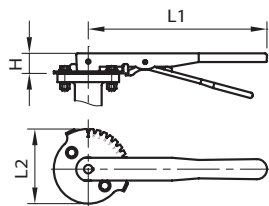
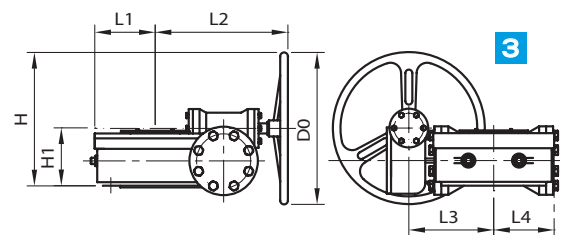


Fig.	DN	L1	L2	L3	L4	H	H1	D0
1	50-150	267	52	-	-	32	-	-
	200-300	359	75	-	-	50	-	-
2	80-150	212	45	129	-	113	65	145
	200-250	305	62	171	-	182	70	285
	300-350	300	85	198	-	182	77	285
	400-450	423	120	280	-	247	103	385
	500-600	490	122	316	-	270	143	385
3	700	173	359	245	173	373	158	425
	800-900	146	337	230	146	378	149	425
	1000	201	399	279	201	409	185	425



All metal, rubber, and coatings used have been designed for contact with water for human consumption, pursuant to the terms of Italian Health Ministry decree n° 174, dated 6/4/2004.