

ESPANSIT - TYPE C

MOD. 13400 /KG

DN INT. PIPE 25-1300 mm
DN EXT. PIPE 37,5-3000 mm
 CLOSED VERSION



MOD. 13450 /KO

DN INT. PIPE 25-1300 mm
DN EXT. PIPE 37,5-3000 mm
 OPENED VERSION

Conical end seals for sealing the gap between the main pipe and the casing pipe at the ends of crossing.

CHARACTERISTICS

- Special frustum cone shape to compensate for the possible eccentric positions of the pipes.
- Fastening on pipes with metal straps (included).
- Available in an "open" version that is made up of a rubber sheet which can be wrapped around the pipeline, and then glued (using the included adhesive kit) on the flaps so as to form a closed end seal.
- "Open" version can also be used for lines that are already installed.

MATERIALS

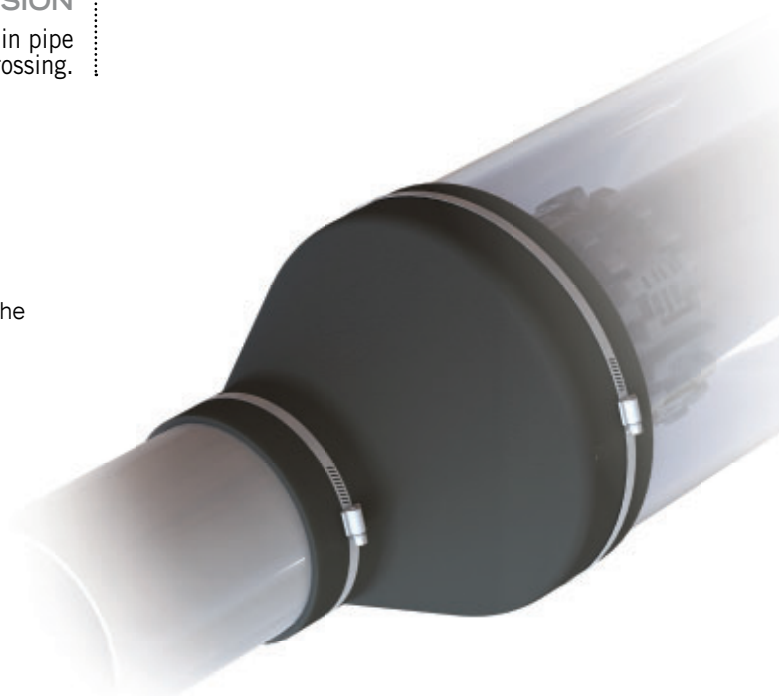
Rubber CR-SBR:
 hardness Shore A 65 ± 5 (UNI 4916)

Colour:
 Black

Tensile strength:
 ~6 MPa (UNI 6065)

Elongation:
 ~200 % (UNI 6065)

Straps:
 Stainless steel



| MAIN PIPE DN (mm) | CASING DN (mm) |
|-------------------|-------------------|
| from 25 to 1300 | from 37,5 to 3000 |

HOW TO APPLY THE ESPANSIT OPEN VERSION END SEALS



1. Spread the glue on both sides that are to fit together, wrapping both around the pipes.



2. Ensure that the edges will adhere with sufficient strength.



3. Fix the pipes by the supplied straps.

CLOSED VERSION

For this version it will be necessary to insert the end seal on the smaller pipe before installing it into the casing pipe. Finally, fix on both pipes using the supplied straps.